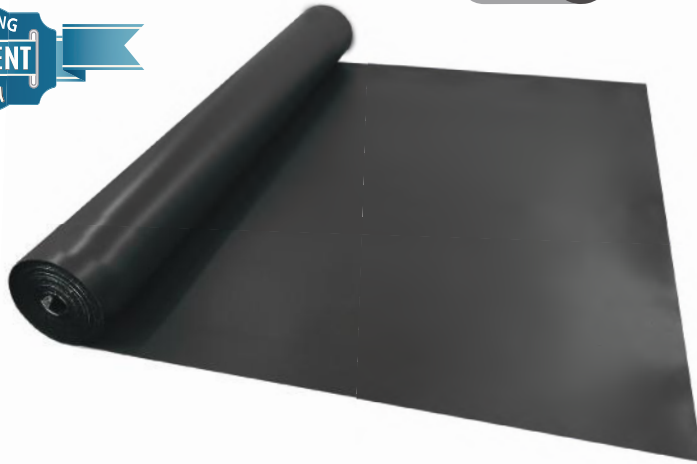


# SoundStep

LUXURY VINYL



## For Use Under

- LVT, LVP
- WPC
- Rigid Core Vinyl
- EVP
- SPC

## Installation Methods

- Floating
- Double Glue Down

**Delta  $\Delta$  IIC 22**

**IIC 70** | **IIC 50**  
6" concrete WITH ceiling assembly | 6" concrete NO ceiling assembly

**STC 62** | **STC 51**  
6" concrete WITH ceiling assembly | 6" concrete NO ceiling assembly



### MULTILAYER FLOORING UNDERLAYMENT

Supportive to all luxury vinyl and multilayer flooring.



### EXCELLENT SOUND REDUCTION

Absorbs unwanted noise and keeps it from traveling to other rooms. Makes click-together floors sound less hollow underfoot.



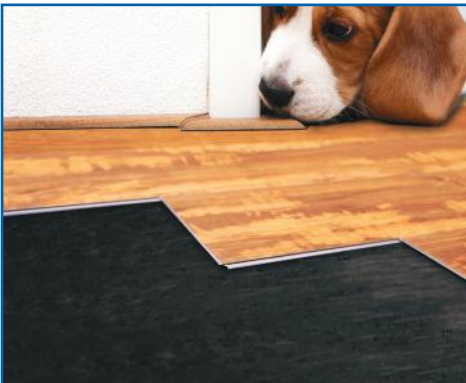
### MOISTURE PROTECTION

Protects overlying investment from harmful moisture and elevated PH levels in the subfloors underneath.



### COST EFFECTIVE

Priced to fit any budget while offering upgrade performance over less expensive foam material underlays.



## INSTALLATION METHODS

### FLOATING FLOORS

1. Roll out underlayment vapor barrier side up and butt seams together
2. Tape seams with waterproof tape
3. Click & lock floating floors over the top according to manufacturer

### DOUBLE GLUED DOWN FLOORS

1. Roll out underlayment with the vapor barrier side up and butt seams together
2. Adhere to subfloor using recommended flooring manufacturer's adhesive and recommended trowel size and install method
3. Roll over the underlayment with a 75 or 100 pound roller
4. Adhere flooring over the top using manufacturer's recommended adhesive and trowel size

\*ENSURE TO READ THE COMPLETE INSTALLATION INSTRUCTIONS BEFORE INSTALLATION

### ADVANTAGES

- Excellent sound rating: Delta $\Delta$ sound rating = Up to 22
- Designed to support all luxury vinyl and multilayer flooring
- Superior compression characteristics for support
- Reduces reflective noise & floor sound transmission
- Can use over concrete and wood subfloors
- Suitable over radiant heated floors

### LIMITATIONS

SoundStep is not suitable for use as underlayment for:

- Ceramic tile
- Carpet
- Sheet-vinyl
- VCT

Installations over concrete in high moisture areas (vapor emission rate above 3 lbs/ 1000 sq ft/ 24 hrs) will require additional protection such as a concrete sealant or polyethylene vapor barrier.

### APPROVED SUBSTRATES

- Dry, completely cured concrete (at least 28 days old)
- Concrete and masonry blocks
- Cement backer units (CBU)
- Cementitious screeds, leveling coats and mortar beds
- Waterproofing and crack-isolation membranes
- Wood, plywood, or OSB subfloors that meet NWFA Subfloor Guidelines and Specifications, and meet applicable building codes.
- Cement terrazzo floors

### PACKAGING

40" x 30' (100 sq ft) do-it-yourself size rolls.

**SSXLLV100**

## TECHNICAL DATA

- Weight ..... 3 lbs. per Roll
- Thickness ..... 1mm
- Density ..... 8# (+/-10%)
- WVTR..... 0.18 lbs/1000sqft/day per ASTM E96
- Compression Resistance@25% ..... 11.5 psi
- Compression Resistance@50% ..... 23.5 psi
- Compression Set@25% ..... 11.00%

## SOUND PROPERTIES

### IMPACT SOUND TRANSMISSION

The method is designed to measure the impact sound transmission performance of a floor-ceiling assembly in a controlled laboratory environment.

IIC	Flooring	Sub-floor
70	4mm Floating Plank	over a 6" concrete subfloor with a suspended ceiling
50	4mm Floating Plank	over a 6" concrete subfloor with NO ceiling
69	2mm Glued Plank	over a 6" concrete subfloor with a suspended ceiling

### SOUND TRANSMISSION LOSS

The sound-insulating property of a partition element is expressed in terms of the sound transmission loss.

STC	Flooring	Sub-floor
62	4mm Floating Plank	over a 6" concrete subfloor with a suspended ceiling
51	4mm Floating Plank	over a 6" concrete subfloor with NO ceiling
61	2mm Glued Plank	over a 6" concrete subfloor with a suspended ceiling

### DELTA TEST

Tests the impact insulation difference between a bare concrete subfloor with no flooring materials and the same concrete subfloor with flooring and underlayment.

Delta IIC	Flooring
Up to 22	SoundStep LV under Wood Plastic Composite (WPC)

